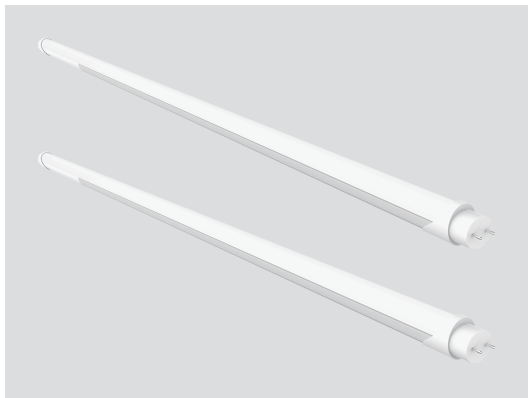


## 5-in-1 Color Temperature 5-in-1 Wattage



## Type A+B Ballast Compatible LED T8 Tube

### FEATURES AND SPECIFICATIONS

#### Construction

- 4FT T8 LED Lamp | 10/12/15/18/22W | 3500/4000/5000/5700/6500K
- > 80 CRI
- High-Efficiency | Single-or Double-ended Line Voltage Wiring
- Housing: Aluminum+PC

#### Electrical

- Input Voltage: 120-277Vac 50/60Hz
- Color Select technology (3500/4000/5000/5700/6500K)
- Frosted PC lens eliminates pixelation
- Approximately 60% more energy-efficient than standard F32T8 lamps
- 140+ Lumens per Watt

#### Applications

- Offices, retail, schools, restaurants, healthcare, residential, and hospitality applications.

#### Installation

- Replacement for conventional fluorescent lamp
- Single- or double-ended line voltage wiring
- Operating temperature: -20°C/-4°F to 45°C/113°F
- Storage temperature: -30°C/-22°F to 60°C/140°F

#### Listing

- ETL Listed
- DesignLights Consortium®(DLC) Standard.

#### Warranty

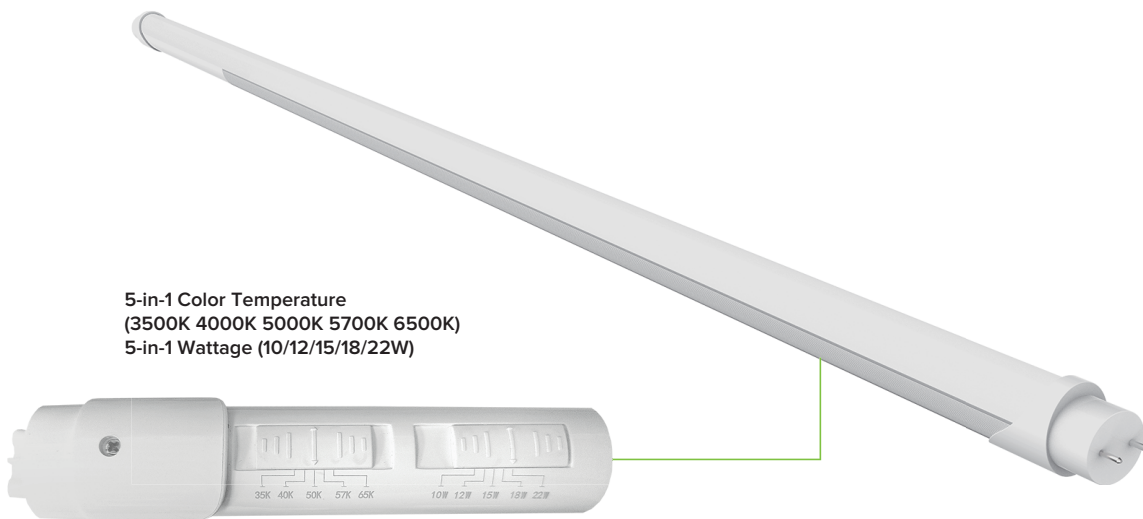
- 5-year limited warranty

Specs at a Glance	* Nominal Wattage (Switchable)
Configuration	<b>ECO-T8-FAB-XXW-TCP</b>
Wattage (W)*	10/12/15/18/22W Wattage Adjustable
Lumens (lm)	1,400-3,080lm
CCT (K)	3500/4000/5000/5700/6500K(Switchable)
Efficacy (LPW)	Up to 140
CRI	>80
Input Voltage	120-277VAC, 50/60Hz
Operating Temp	-20°C/-4°F to 45°C/113°F
Certifications	ETL DLC 5.1 Standard
Warranty	5-year limited warranty

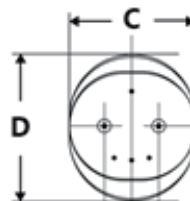
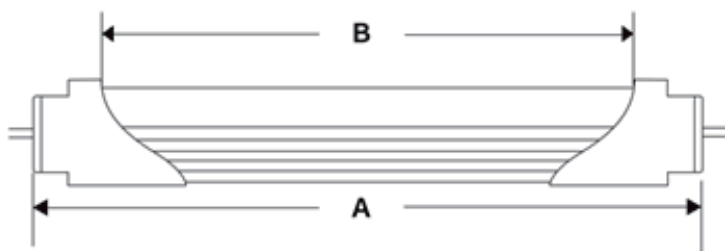
## Ordering information

**Model**            **Description**

**ECO 8-FAB-XXW-TCP** LED Tube, Power Switchable 10/12/15/18/22W, Color Switchable 3500/4000/5000/5700/6500K, 120-277VAC, Single- or double-ended line voltage wiring

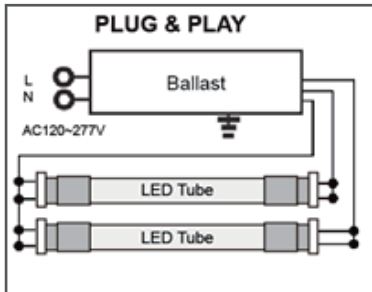


## Dimensions



LAMP DIMENSIONS	
A	47.17"
B	45.47"
C	1.32"
D	1.15"

## Installation Instruction



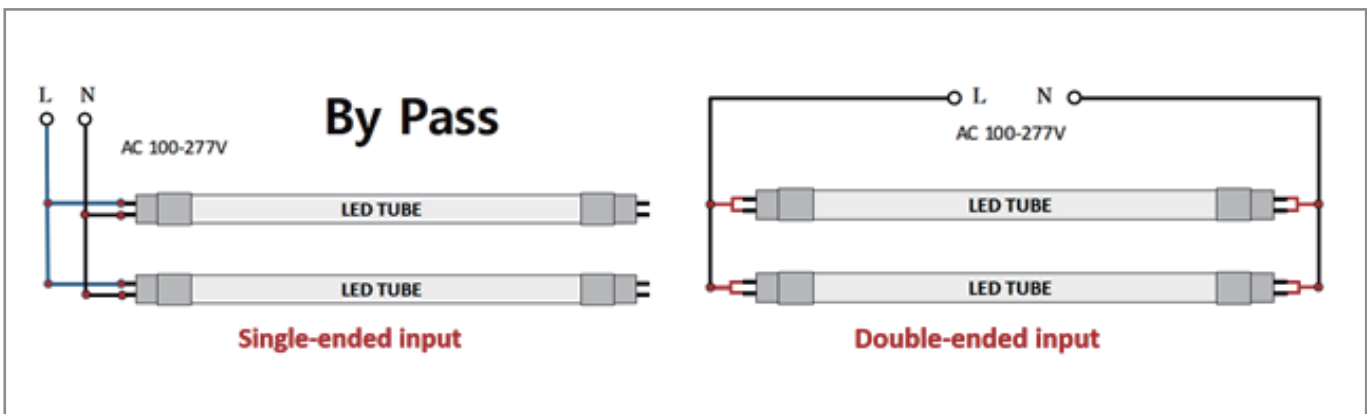
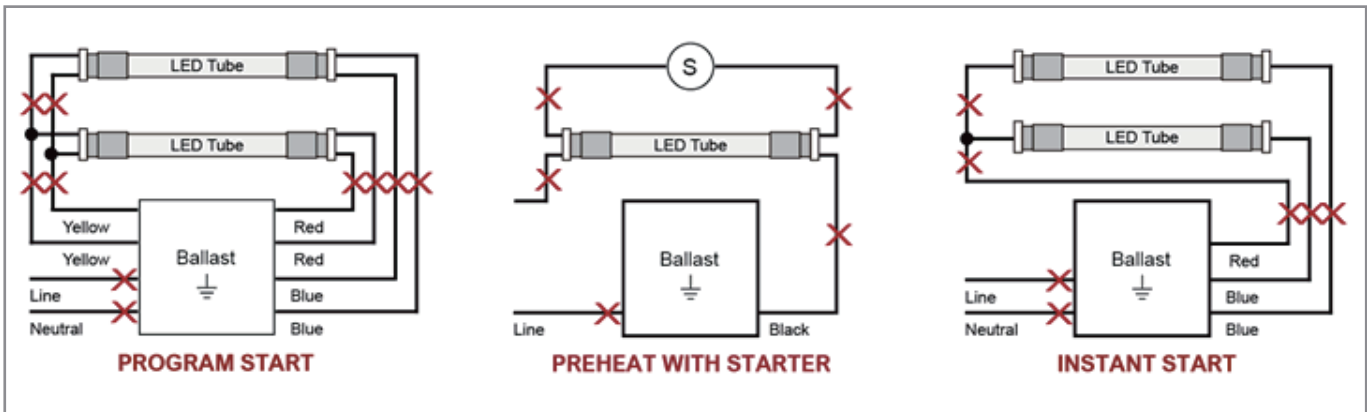
### Direct Replacement (With Existing Ballast)

**Warning: Check Ballast Compatibility List before installation.**

- Turn power off.
- Remove lens or diffuser, if applicable.
- Remove existing fluorescent lamp(s) from the luminaire.
- Install the LED replacement lamp(s), one lamp for each fluorescent lamp removed.
- Replace lens or diffuser back in place, if applicable.
- Turn power back on.

### By-pass Replacement (Without Ballast)

- Disconnect power from fixture.
- Remove fluorescent lamps.
- Remove lens and wiring compartment, if applicable.
- Cut all wires connected to ballast (see Figure A: Typical Ballast Configurations).



## Packing Information

Model number	L /inch	W /inch	H /inch	QTY/ctn	G.W./lbs	CTN QTY/pallet
ECO -T8-FAB-XXW-TCP	48.8	7.4	6.7	30	37.7	---